

# SURVEY OF TEN TRACTS OF LAND IN THE EAST 1/2 SECTION 28 AND THE NE 1/4 SECTION 33, T3N R28E DE BACA COUNTY NEW MEXICO

Said tracts being described as follows:

- TRACT 1**  
BEGINNING AT A REBAR SET NO028'45"W, A DISTANCE OF 2662.50 FEET, AND S89'49'27"W, A DISTANCE OF 82.99 FEET FROM A STONE FOUND FOR THE SOUTHEAST CORNER OF SECTION 33, T3N R28E;  
THENCE N00'01'02"E, ALONG A WIRE FENCE LINE, A DISTANCE OF 1330.50 FEET TO A REBAR SET FOR THE NORTHEAST CORNER OF SAID TRACT;  
THENCE S89'01'19"W, A DISTANCE OF 1298.02 FEET TO A REBAR SET FOR THE NORTHWEST CORNER OF SAID TRACT;  
THENCE S00'21'39"W, A DISTANCE OF 1312.38 FEET TO A REBAR SET FOR THE SOUTHWEST CORNER OF SAID TRACT;  
THENCE N89'49'27", ALONG A WIRE FENCE LINE, A DISTANCE OF 1305.71 FEET TO THE POINT AND PLACE OF BEGINNING.  
SAID TRACT CONTAINS 39.489 ACRES OF LAND MORE OR LESS.
- TRACT 2**  
BEGINNING AT A REBAR SET NO028'45"W, A DISTANCE OF 2662.50 FEET, AND S89'49'27"W, A DISTANCE OF 1388.70 FEET FROM A STONE FOUND FOR THE SOUTHWEST CORNER OF SECTION 33, T3N R28E;  
THENCE S89'49'27"W, ALONG A WIRE FENCE LINE, A DISTANCE OF 1273.78 FEET TO A REBAR SET FOR THE SOUTHWEST CORNER OF SAID TRACT;  
THENCE N00'00'35"E, ALONG A WIRE FENCE LINE, A DISTANCE OF 1294.27 FEET TO A REBAR SET FOR THE NORTHWEST CORNER OF SAID TRACT;  
THENCE N89'01'19"E, A DISTANCE OF 1282.10 FEET TO A REBAR SET FOR THE NORTHEAST CORNER OF SAID TRACT;  
THENCE S00'21'39"W, A DISTANCE OF 1312.38 FEET TO THE POINT AND PLACE OF BEGINNING;  
SAID TRACT CONTAINS 38.233 ACRES OF LAND MORE OR LESS.
- TRACT 3**  
BEGINNING AT A REBAR SET NO028'45"W, A DISTANCE OF 3993.00 FEET, AND S89'01'19"W, A DISTANCE OF 71.46 FEET FROM A STONE FOUND FOR THE SOUTHWEST CORNER OF SECTION 33, T3N R28E;  
THENCE S89'01'19"W, A DISTANCE OF 1298.02 FEET TO A REBAR SET FOR THE SOUTHWEST CORNER OF SAID TRACT;  
THENCE N00'21'39"E, A DISTANCE OF 1300.42 FEET TO A REBAR SET FOR THE NORTHWEST CORNER OF SAID TRACT;  
THENCE N89'59'18"E, A DISTANCE OF 1290.03 FEET TO A REBAR SET FOR THE NORTHEAST CORNER OF SAID TRACT;  
THENCE S00'01'02"W, ALONG A WIRE FENCE LINE, A DISTANCE OF 1278.50 FEET TO THE POINT AND PLACE OF BEGINNING;  
SAID TRACT CONTAINS 38.301 ACRES OF LAND MORE OR LESS.
- TRACT 4**  
BEGINNING AT A REBAR SET NO028'45"W, A DISTANCE OF 3993.00 FEET, AND S89'01'19"W, A DISTANCE OF 1369.48 FEET FROM A STONE FOUND FOR THE SOUTHWEST CORNER OF SECTION 33, T3N R28E;  
THENCE N00'21'39"E, A DISTANCE OF 1300.42 FEET TO A REBAR SET FOR THE NORTHEAST CORNER OF SAID TRACT;  
THENCE S89'59'18"W, A DISTANCE OF 1289.98 FEET TO A REBAR SET FOR THE NORTHWEST CORNER OF SAID TRACT;  
THENCE N00'00'35"E, ALONG A WIRE FENCE LINE, A DISTANCE OF 1322.02 FEET TO A REBAR SET FOR THE SOUTHWEST CORNER OF SAID TRACT;  
THENCE N89'59'18"E, A DISTANCE OF 1282.10 FEET TO THE POINT AND PLACE OF BEGINNING.  
SAID TRACT CONTAINS 38.708 ACRES OF LAND MORE OR LESS.
- TRACT 5**  
BEGINNING AT A REBAR SET S89'59'18"W, A DISTANCE OF 60.38 FEET, FROM THE SOUTHWEST CORNER OF SECTION 28, T3N R28E;  
THENCE N00'01'02"E, ALONG A WIRE FENCE LINE, A DISTANCE OF 1331.97 FEET TO A REBAR SET FOR THE NORTHEAST CORNER OF SAID TRACT;  
THENCE S89'55'00"W, A DISTANCE OF 1282.05 FEET TO A REBAR SET FOR THE NORTHWEST CORNER OF SAID TRACT;  
THENCE S00'21'39"W, A DISTANCE OF 1330.39 FEET TO A REBAR SET FOR THE SOUTHWEST CORNER OF SAID TRACT;  
THENCE N89'59'18"E, ALONG A WIRE FENCE LINE, A DISTANCE OF 1290.03 FEET TO THE POINT AND PLACE OF BEGINNING.  
SAID TRACT CONTAINS 39.300 ACRES OF LAND MORE OR LESS.
- TRACT 6**  
BEGINNING AT A REBAR SET S89'59'18"W, A DISTANCE OF 1350.41 FEET, FROM THE SOUTHWEST CORNER OF SECTION 28, T3N R28E;  
THENCE S89'59'18"W, A DISTANCE OF 1289.98 FEET TO A REBAR SET FOR THE SOUTHWEST CORNER OF SAID TRACT;  
THENCE N00'00'20"E, ALONG A WIRE FENCE LINE, A DISTANCE OF 1328.73 FEET TO A REBAR SET FOR THE NORTHEAST CORNER OF SAID TRACT;  
THENCE N89'55'00"E, A DISTANCE OF 1298.24 FEET TO A REBAR SET FOR THE NORTHWEST CORNER OF SAID TRACT;  
THENCE S00'21'39"W, A DISTANCE OF 1330.39 FEET TO THE POINT AND PLACE OF BEGINNING.  
SAID TRACT CONTAINS 39.499 ACRES OF LAND MORE OR LESS.
- TRACT 7**  
BEGINNING AT A REBAR SET NO028'45"E, A DISTANCE OF 1331.97 FEET, AND S89'55'00"W, A DISTANCE OF 57.66 FEET FROM A REBAR FOUND AS THE SOUTHWEST CORNER OF SECTION 28, T3N R28E;  
THENCE S89'55'00"W, A DISTANCE OF 2580.29 FEET TO A REBAR SET FOR A TRACT CORNER;  
THENCE N00'00'20"E, ALONG A WIRE FENCE LINE, A DISTANCE OF 309.98 FEET TO A REBAR SET FOR A TRACT CORNER OF SAID TRACT;  
THENCE S89'17'02"W, ALONG A WIRE FENCE LINE, A DISTANCE OF 35.53 FEET TO A REBAR SET FOR A TRACT CORNER;  
THENCE N00'00'35"W, ALONG A WIRE FENCE LINE, A DISTANCE OF 345.61 FEET TO A REBAR SET FOR A TRACT CORNER;  
THENCE N89'53'56"E, A DISTANCE OF 2615.92 FEET TO A REBAR SET FOR THE NORTHEAST CORNER OF SAID TRACT;  
THENCE S00'01'02"W, ALONG A WIRE FENCE LINE, A DISTANCE OF 656.00 FEET TO THE POINT AND PLACE OF BEGINNING.  
SAID TRACT CONTAINS 39.117 ACRES OF LAND MORE OR LESS.
- TRACT 8**  
BEGINNING AT A REBAR SET NO028'45"E, A DISTANCE OF 1987.97 FEET, AND S89'53'56"W, A DISTANCE OF 56.32 FEET FROM A REBAR FOUND FOR THE SOUTHWEST CORNER OF SECTION 28, T3N R28E;  
THENCE N00'01'02"E, ALONG A WIRE FENCE LINE, A DISTANCE OF 656.00 FEET TO A REBAR SET FOR THE NORTHEAST CORNER OF SAID TRACT;  
THENCE S89'53'56"E, A DISTANCE OF 2616.01 FEET TO A REBAR SET FOR THE NORTHWEST CORNER OF SAID TRACT;  
THENCE S00'00'35"E, ALONG A WIRE FENCE LINE, A DISTANCE OF 656.00 FEET TO A REBAR SET FOR THE SOUTHWEST CORNER OF SAID TRACT;  
THENCE N89'53'56"E, A DISTANCE OF 2615.92 FEET TO THE POINT AND PLACE OF BEGINNING.  
SAID TRACT CONTAINS 39.396 ACRES OF LAND MORE OR LESS.
- TRACT 9**  
BEGINNING AT A REBAR SET NO028'45"W, A DISTANCE OF 2628.53 FEET, AND S89'53'56"W, A DISTANCE OF 54.98 FEET FROM A #5 REBAR FOUND FOR THE NORTHEAST CORNER OF SECTION 28, T3N R28E;  
THENCE S89'53'56"W, A DISTANCE OF 2616.01 FEET TO A REBAR SET FOR THE SOUTHWEST CORNER OF SAID TRACT;  
THENCE N00'00'35"E, AND ALONG A WIRE FENCE LINE, A DISTANCE OF 656.00 FEET TO A REBAR SET FOR THE NORTHWEST CORNER OF SAID TRACT;  
THENCE N89'54'23"E, A DISTANCE OF 2593.82 FEET TO A REBAR SET FOR THE NORTHEAST CORNER OF SAID TRACT;  
THENCE S01'55'43"E, ALONG A WIRE FENCE LINE, A DISTANCE OF 656.00 FEET TO THE POINT AND PLACE OF BEGINNING;  
SAID TRACT CONTAINS 39.219 ACRES OF LAND MORE OR LESS.
- TRACT 10**  
BEGINNING AT A REBAR SET S00'28'45"W, A DISTANCE OF 1972.53 FEET, AND S89'54'23"W, A DISTANCE OF 75.91 FEET FROM A #5 REBAR FOUND FOR THE NORTHEAST CORNER OF SECTION 28, T3N R28E;  
THENCE N02'50'47"W, ALONG A WIRE FENCE LINE, A DISTANCE OF 656.00 FEET TO A REBAR SET FOR THE NORTHEAST CORNER OF SAID TRACT;  
THENCE S89'55'24"W, AND ALONG A WIRE FENCE LINE, A DISTANCE OF 2561.13 FEET TO A REBAR SET FOR THE NORTHWEST CORNER OF SAID TRACT;  
THENCE S00'00'35"E, ALONG A WIRE FENCE LINE, A DISTANCE OF 656.00 FEET TO A REBAR SET FOR THE SOUTHWEST CORNER OF SAID TRACT;  
THENCE N89'54'23"E, A DISTANCE OF 2593.82 FEET TO THE POINT AND PLACE OF BEGINNING.  
SAID TRACT CONTAINS 38.794 ACRES OF LAND MORE OR LESS.

**GENERAL SURVEY NOTES:**  
THE SURVEYED TRACT IS LOCATED IN: E.1/2 SECTION 28 & NE1/4 SECTION 33 T3N R28E  
BASIS OF BEARINGS: GPS (SPC 83 NEW MEXICO EAST ZONE)

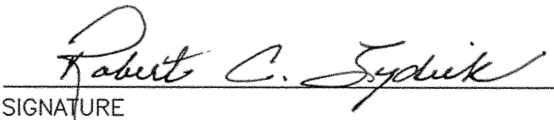
DOCUMENTS USED IN THIS SURVEY		
DESCRIPTION	RECORDED DATE	RECORDED DATA
LYDICK ENGINEERS FIELD BOOK	06/05/2022	BK. 580 PG. 63
LYDICK ENGINEERS SURVEY PLAT	07/07/2005	PLAT NO. 18019

**INDEXING INFORMATION FOR COUNTY CLERK**  
THE NAME OF THE OWNERS OF THE SURVEYED TRACT AS INDICATED BY THE LAST RECORDED DEED: RICHARD NOLTE  
ADDRESS: N/A  
PARCEL CONTAINS: 387.532 ACRES / 16,880,893.92 SQUARE FEET OF LAND ±  
PROPERTY GEO CODE #: 1-165-013-460-460-00

**SURVEYOR'S CERTIFICATION**

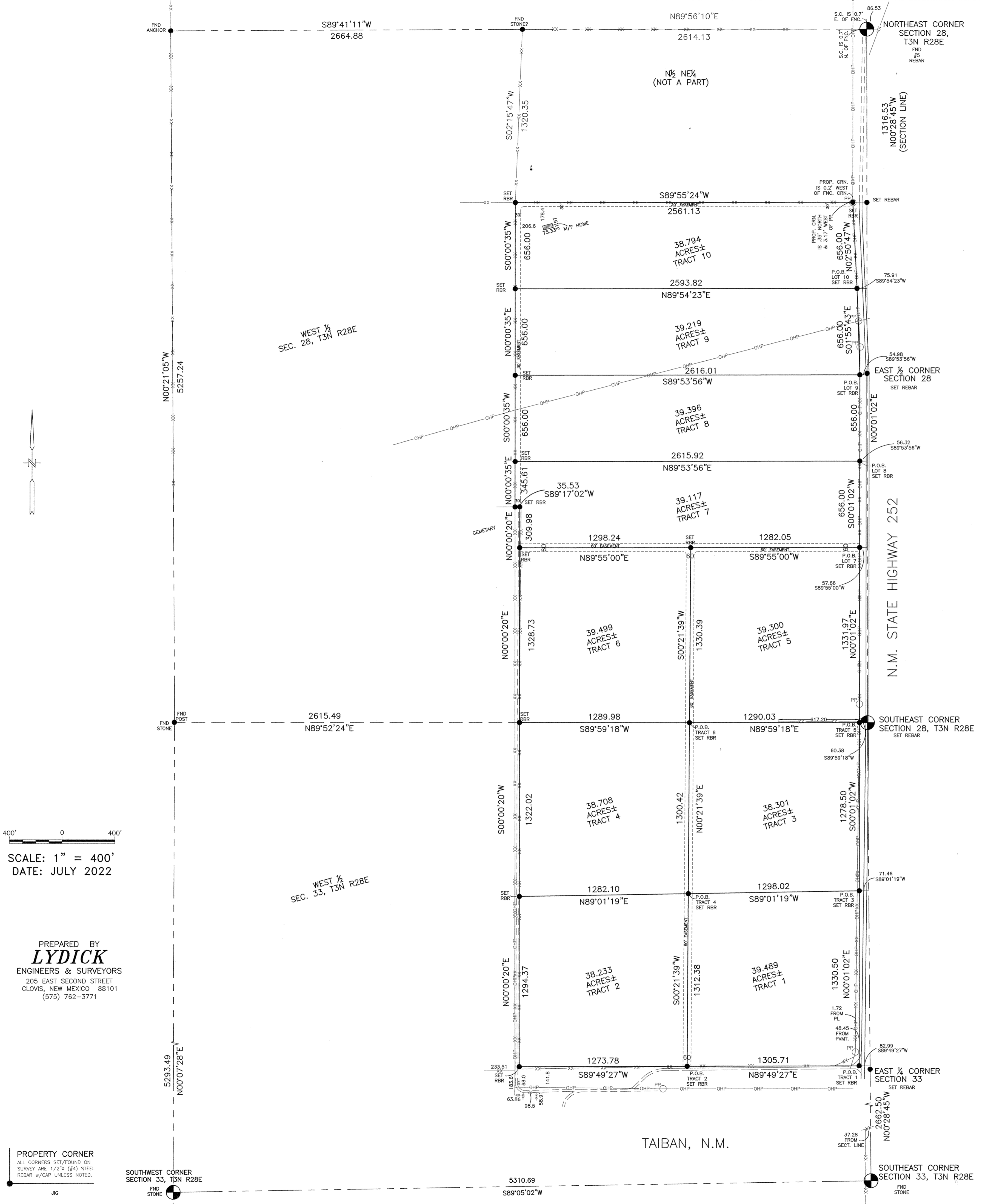
I, ROBERT C. LYDICK, NEW MEXICO PROFESSIONAL SURVEYOR NO 5955, DO HEREBY CERTIFY THAT THIS BOUNDARY SURVEY PLAT AND THE ACTUAL SURVEY ON THE GROUND UPON WHICH IT IS BASED WERE PERFORMED BY ME OR UNDER MY DIRECT SUPERVISION; THAT I AM RESPONSIBLE FOR THIS SURVEY; THAT THIS SURVEY MEETS THE MINIMUM STANDARDS FOR SURVEYING IN NEW MEXICO; AND THAT IT IS TRUE AND CORRECT TO THE BEST OF MY KNOWLEDGE AND BELIEF.

I FURTHER CERTIFY THAT THIS SURVEY IS NOT A LAND DIVISION OR SUBDIVISION AS DEFINED IN THE NEW MEXICO SUBDIVISION ACT AND THAT THIS INSTRUMENT IS A BOUNDARY SURVEY OF AN EXISTING TRACT OR TRACTS.

  
 SIGNATURE \_\_\_\_\_ DATE: 07/29/2022  
 P.E. & L.S. # 5955

STATE OF NEW MEXICO  
COUNTY OF DE BACA  
FILED OF RECORD

DATE: \_\_\_\_\_ 2022  
TIME: \_\_\_\_\_ AM/PM  
BK. \_\_\_\_\_ PG. \_\_\_\_\_  
RECORDED: \_\_\_\_\_  
CLERK: \_\_\_\_\_  
DEP: \_\_\_\_\_



SCALE: 1" = 400'  
DATE: JULY 2022

PREPARED BY  
**LYDICK**  
ENGINEERS & SURVEYORS  
205 EAST SECOND STREET  
CLOVIS, NEW MEXICO 88101  
(575) 762-3771

PROPERTY CORNER  
ALL CORNERS SET/FOUND ON  
SURVEY ARE 1/2" (Ø) (#4) STEEL  
REBAR w/CAP UNLESS NOTED.